



INDOFINE Chemical Company, Inc.

121 Stryker Lane, Bldg. 30, Suite 1 • Hillsborough, NJ 08844 • U.S.A.

Phone: (908) 359-6778 • FAX: (908) 359-1179

website: www.indofinechemical.com

e-mail: chemical@indofinechemical.com

TEST RESULTS

TEST	SPECIFICATION	RESULTS
Residual solvents by GC:		
Chloroform	Not more than 60 ppm	BDL
Acetone	Not more than 5000 ppm	BDL
N-Hexane	Not more than 290 ppm	BDL
Methanol	Not more than 3000 ppm	BDL
Ethanol	Not more than 5000 ppm	BDL
Ethyl acetate	Not more than 5000 ppm	BDL

Authorized by:

The sample is having the above characteristics

*BDL=Below detectable limits

Chromatograms enclosed



INDOFINE Chemical Company, Inc.

121 Stryker Lane, Bldg. 30, Suite 1 • Hillsborough, NJ 08844 • U.S.A.

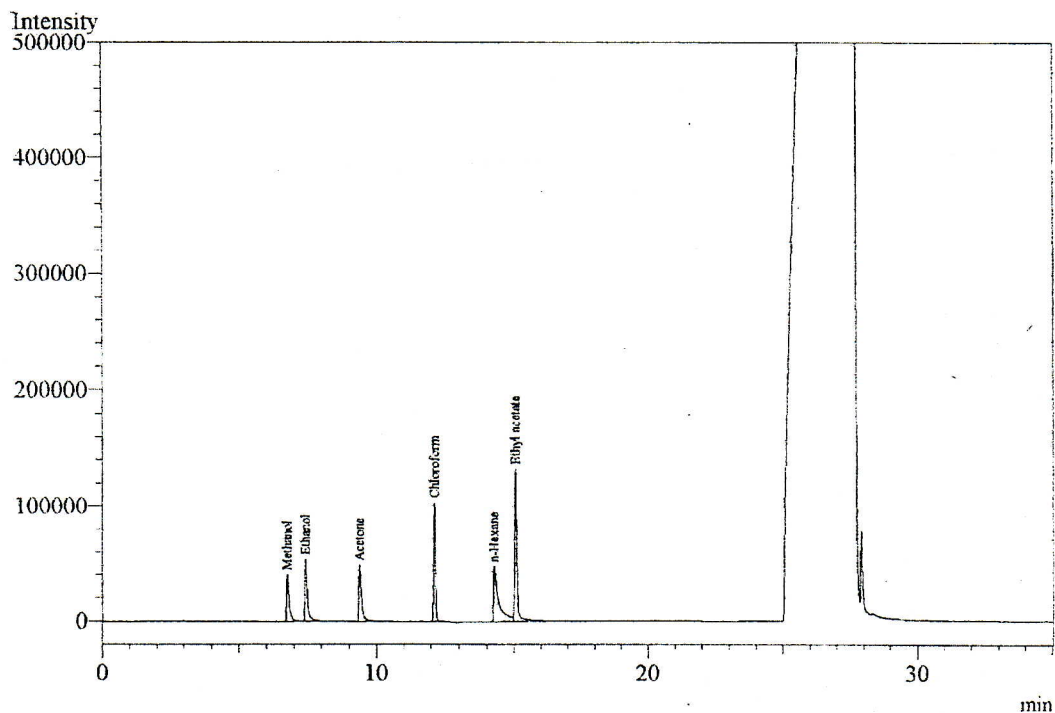
Phone: (908) 359-6778 • FAX: (908) 359-1179

website: www.indofinechemical.com

e-mail: chemical@indofinechemical.com

Analysis Date & Time : 01/06/12 20:04:42
User Name : Admin
Sample Name : KMP
Sample ID : Std
Data Name : D:\year-2012\June-12\120601 KMP Std.gcd
Method Name : D:\Method-2012\GC-HS.gcm

Catalog No.: K-102
Product name: Kaempferol
Lot No.: 0811069



Peak#	Ret. Time	Area	Area%	Name
1	6.745	272230	9.6657	Methanol
2	7.410	336576	11.9504	Ethanol
3	9.251	309798	10.9997	Acetone
4	12.261	476678	16.9249	Chloroform
5	14.213	611365	21.7070	n-Hexane
6	15.026	809790	28.7523	Ethyl acetate
Total		2816437	100.0000	



INDOFINE Chemical Company, Inc.

121 Stryker Lane, Bldg. 30, Suite 1 • Hillsborough, NJ 08844 • U.S.A.

Phone: (908) 359-6778 • FAX: (908) 359-1179

website: www.indofinechemical.com

e-mail: chemical@indofinechemical.com

Analysis Date & Time : 01/06/12 20:45:42
User Name : Admin
Sample Name : KMP
Sample ID : Sample
Data Name : D:\year-2012\June-12\120601 KMP Spl.gcd
Method Name : D:\Method-2012\GC-HS.gcm

Catalog No.: K-102
Product name: Kaempferol
Lot No.: 0811069

